

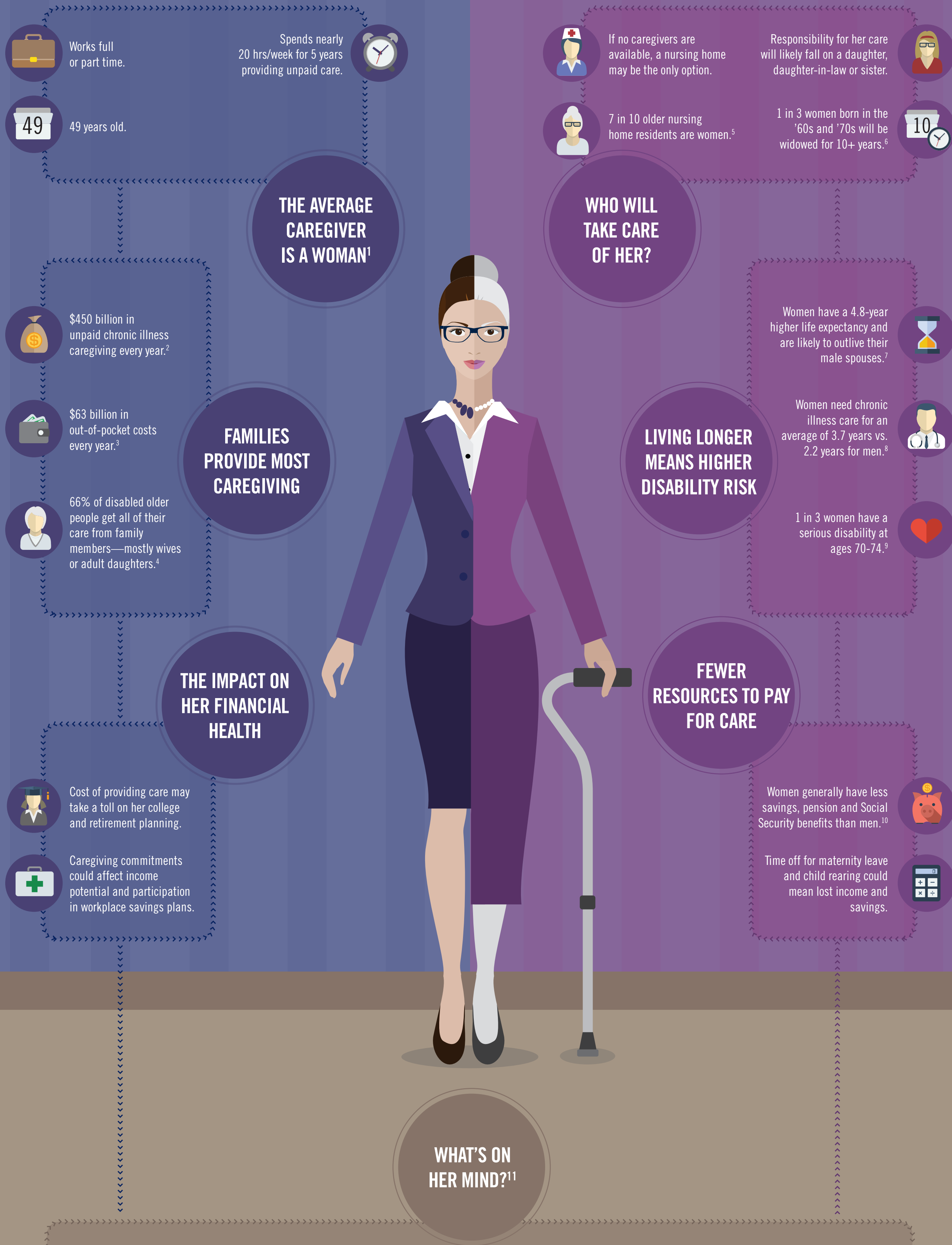
# WOMEN:

# THE TWO SIDES OF CHRONIC ILLNESS

Women are more likely than men to provide chronic illness care to loved ones. And later, they're more likely to need care themselves. See the financial impact these challenges could have.

## FROM GIVING CARE

## TO NEEDING CARE



<sup>1</sup> All corresponding data from Feinberg, L., testimony before the Commission on Long-Term Care, "Populations in Need of LTSS and Service Delivery Issues," AARP Public Policy Institute, July 17, 2013.  
<sup>2</sup> Prudential, "Women at Risk: The Disability Survival Paradox," 2015.  
<sup>3</sup> Prudential, "Women at Risk: The Disability Survival Paradox," 2015.  
<sup>4</sup> Feinberg, L., testimony before the Commission on Long-Term Care "Populations in Need of LTSS and Service Delivery Issues," AARP Public Policy Institute, July 17, 2013.  
<sup>5</sup> Hagen, S., et al., "Rising Demand for Long-Term Services and Supports for Elderly People," Congressional Budget Office, June 26, 2013, p. 13.  
<sup>6</sup> Financing Long-Term Services and Supports for Individuals with Disabilities and Older Adults: Workshop Summary, Johnson, R., IOM (Institute of Medicine) and NRC (National Research Council), 2014, Washington, DC: The National Academies Press, p. 22.  
<sup>7</sup> Prudential, "Women at Risk: The Disability Survival Paradox," 2015.  
<sup>8</sup> U.S. Department of Health and Human Services, "How Much Care Will You Need?," <http://longtermcare.gov/the-basics/how-much-care-will-you-need/>, accessed March 26, 2015.  
<sup>9</sup> Brauit, M.W., "Americans With Disabilities: 2010, Current Population Reports," pp. 70-131, U.S. Census Bureau, July 2012, Fig. 1, p. 3.  
<sup>10</sup> Prudential, "Women at Risk: The Disability Survival Paradox," 2015.  
<sup>11</sup> All corresponding data from Prudential, "Financial Experience & Behaviors Among Women, 2014-2015 Research Study."



Uncover more insights into the chronic illness care challenges women face.

[Download our report >](#)



**Prudential**  
Bring Your Challenges<sup>®</sup>